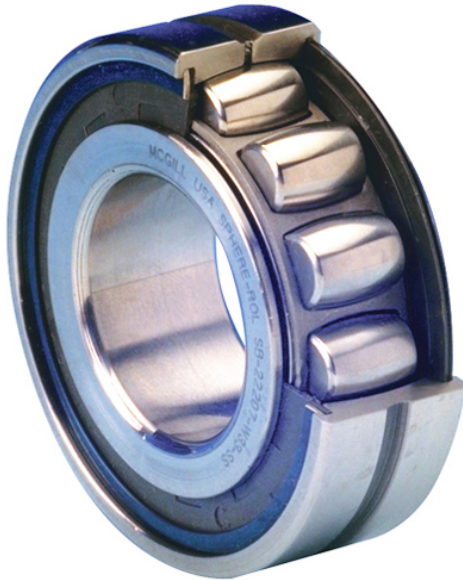




Bearing Manufacturing of America



SB 22220 C3 W33 SS Bearing 2D drawings and 3D CAD models

SB 22220 C3 W33 SS MCGILL Bearings Cam Follower Stud-Mount Cam Followers

Bearing No. SB 22220 C3 W33 SS

d	100 mm
operating temperature range:	-30 ° to 300 ° F
D	180 mm
cage material:	Steel
B	46 mm
seal type:	Standard
bore type:	Straight
bearing material:	Chrome Steel
outer ring type:	Not Split
precision rating:	Not Rated
internal clearance:	C3
finish/coating:	Uncoated
closure type:	Double Sealed
outer ring width:	46 mm
lubrication hole type:	Lubrication Groove & Hole
fillet radius:	0.0790 in
dynamic load capacity:	77700 lbs
series:	22200
static load capacity:	92600 lbs
manufacturer catalog number:	0320066000
maximum rpm:	2500 rpm