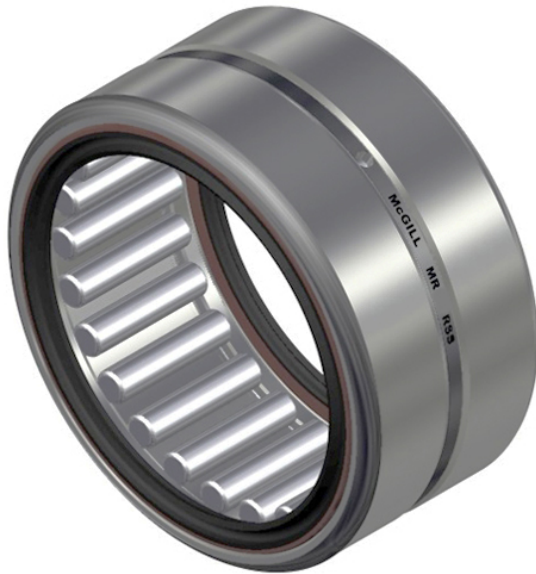




## Bearing Manufacturing of America



MR 18 SSPD Bearing 2D drawings and 3D CAD models

### MR 18 SSPD MCGILL Needle Roller Bearing Inner Rings

Bearing No. MR 18 SSPD

d	1.1250 in
maximum rpm:	3400 RPM
D	1.6250 in
flanges:	No Flange
B	1.0000 in
seal material:	Rubber
needle bearing type:	Machined Bearing with No Inner Ring
series:	MR
closure type:	Double Sealed
lubrication hole type:	Lubrication Groove & Hole
bearing material:	Chrome Steel
precision rating:	Not Rated
operating temperature range:	-30 to +250 ° F
compatible inner ring:	MI 14
cage material:	Steel
standards met:	ABMA, ISO
dynamic load capacity:	8720 lb
manufacturer upc number:	726166065676
static load capacity:	12200 lbs